

8 Studley Street Abbotsford VIC

4 🚗

Located 400m from Victoria Park Station and 50m from Hoddle St this property is well positioned and easy to access.

Features:

- * Building Area: 280m2
- * Modern Office/Showroom Over 3 levels
- * Fully Heated and Air Conditioned
- * Kitchenette & Bathrooms on Ground Floor
- * Bathrooms with Shower
- * x2 Balconies
- * Secure 4 Car Park / Storage Area Via Rear Lane (60m2)
- * Clean & Ready to Move In
- * Zone Commercial 2
- * Available now

Type
Price
Building Size
View

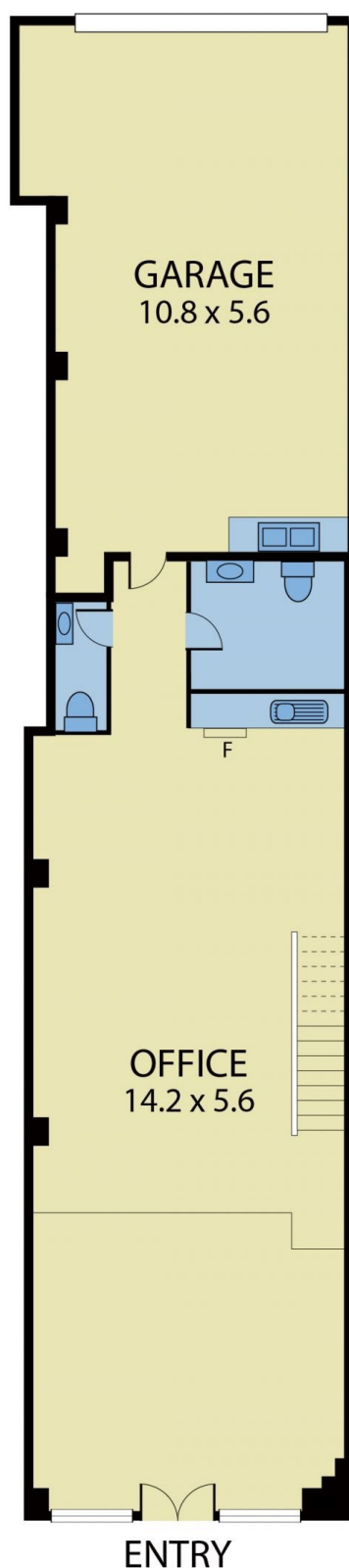
: Offices
: CONTACT AGENT
: 280 sqm
: <https://www.visionrealestate.com.au/lease/vic/inner-city/abbotsford/commercial/offices/8153405>



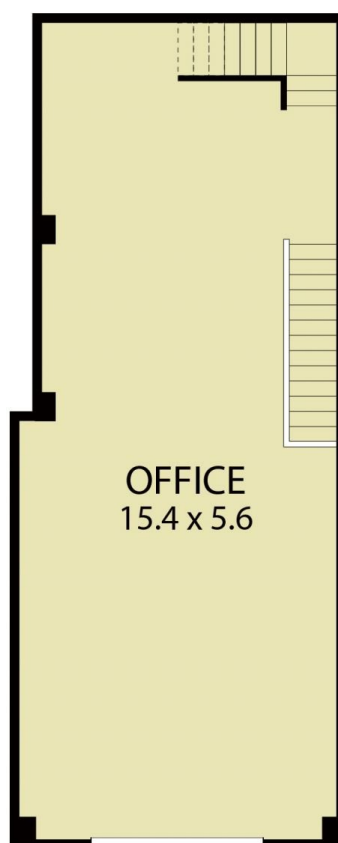
Jamison Tsindos
03 9654 9800

[For full version visit the website](https://www.visionrealestate.com.au)

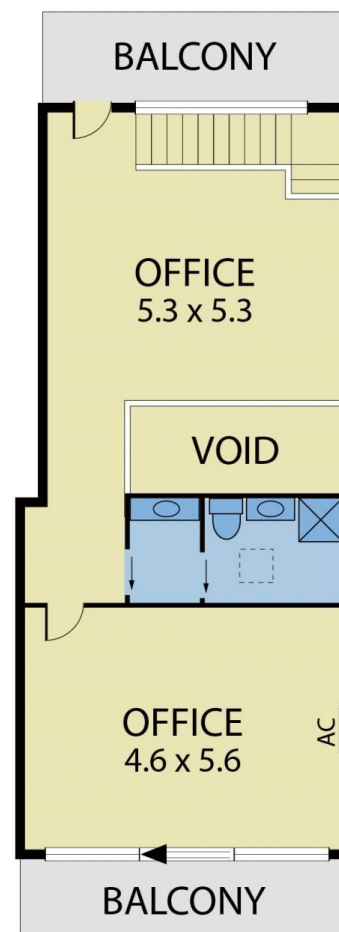
8 Studley Street, Abbotsford



GROUND FLOOR



FIRST FLOOR



SECOND FLOOR

Disclaimer: Whilst we believe the contents of this document to be accurate, we suggest the prospective purchasers make any necessary enquiries to satisfy themselves. We do not accept responsibility for any errors or omissions.