

61 Church Street Abbotsford VIC

Multiple affordable offices ranging in 20m2, 50m2, 70m2 and 100m2, ready for immediate start.

Industrial look and feel throughout.

Features:

- * Big Windows
- * Great Yarra River Views
- * High Ceilings
- * Rustic Charm
- * Blank Canvas
- * Perfect For a Variety of Businesses
- * Amenities On Each Level

Type : Offices

Price : CONTACT AGENT

View : <https://www.visionrealestate.com.au/lease/vic/inner-city/abbotsford/commercial/offices/8115705>

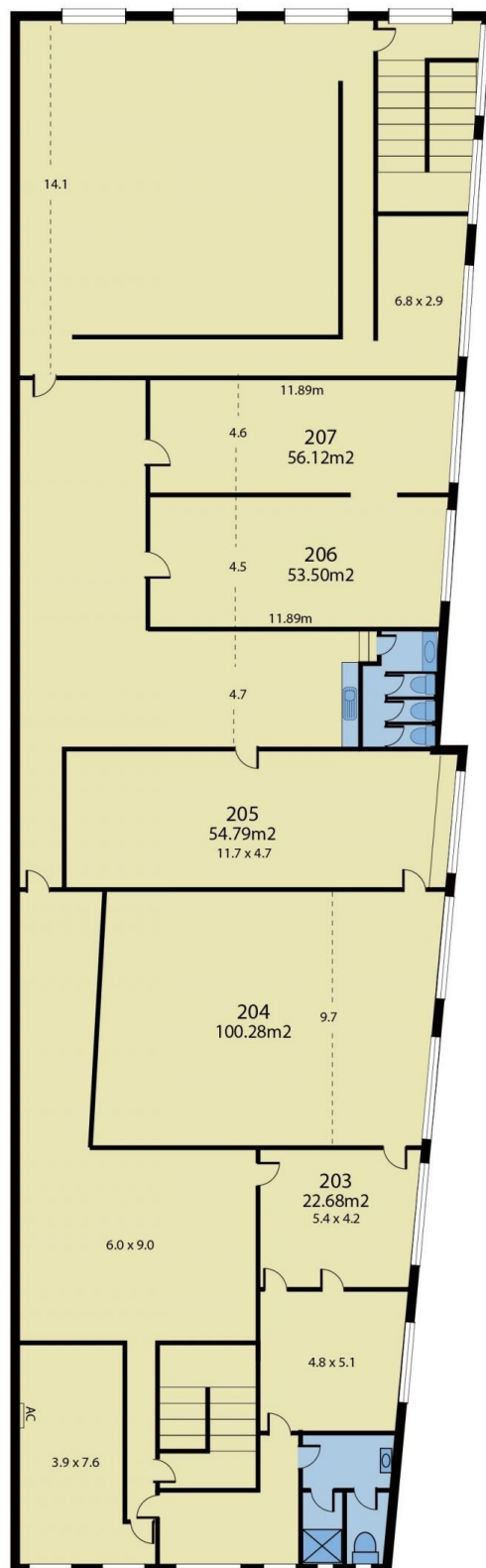


Jamison Tsindos
03 9654 9800

[For full version visit the website](https://www.visionrealestate.com.au)

<https://www.visionrealestate.com.au>

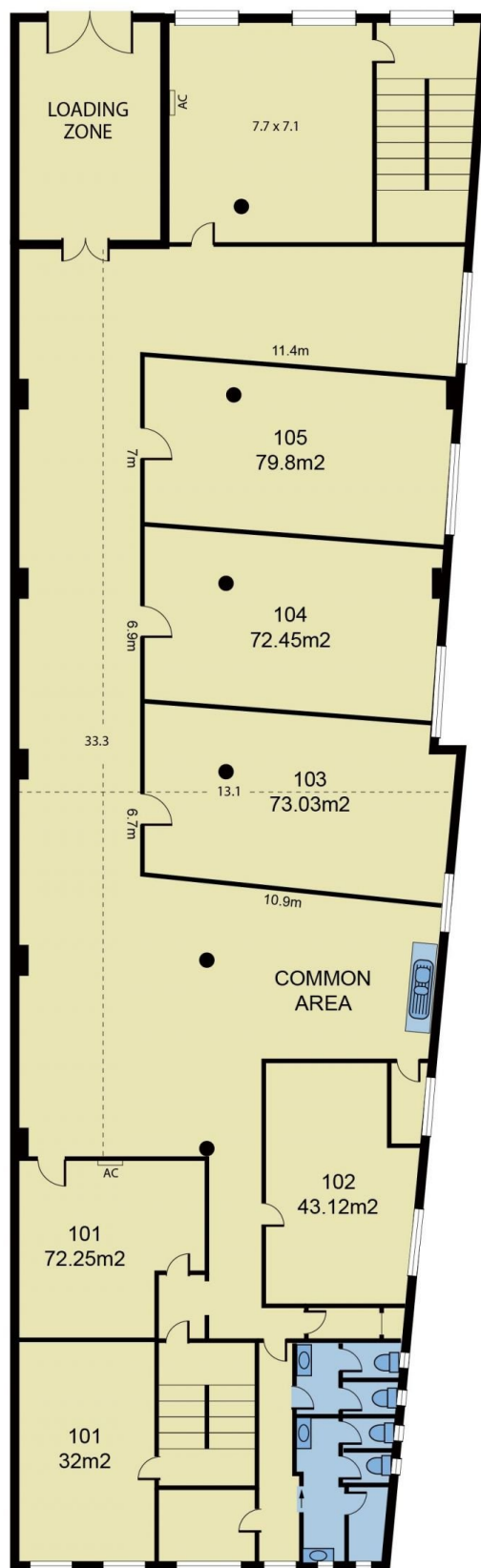
61 Church Street, Abbotsford



TOTAL AREA: 313.68m²
SECOND FLOOR

Disclaimer: Whilst we believe the contents of this document to be accurate, we suggest the prospective purchasers make any necessary enquiries to satisfy themselves. We do not accept responsibility for any errors or omissions.

61 Church Street, Abbotsford



TOTAL AREA: 370m²

FIRST FLOOR

Disclaimer: Whilst we believe the contents of this document to be accurate, we suggest the prospective purchasers make any necessary enquiries to satisfy themselves. We do not accept responsibility for any errors or omissions.