

GF/161 Donald Street Brunswick East VIC

Vision real estate is delighted to offer this ground floor office/working space directly across the road from Allard Park.

Building areas ranging from 104 sqm-367 sqm*.

*Currently set up for photography which includes a Cyclorama.

*Adjustable floor plan.

*High ceilings, polished concrete, security doors, large front windows + side loading dock.

*Ample on street all day parking directly across the road.

Only 400 metres to Holmes St - delivering Tram stop and shops.

*Areas available to lease are as follows:
> 104 sqm*

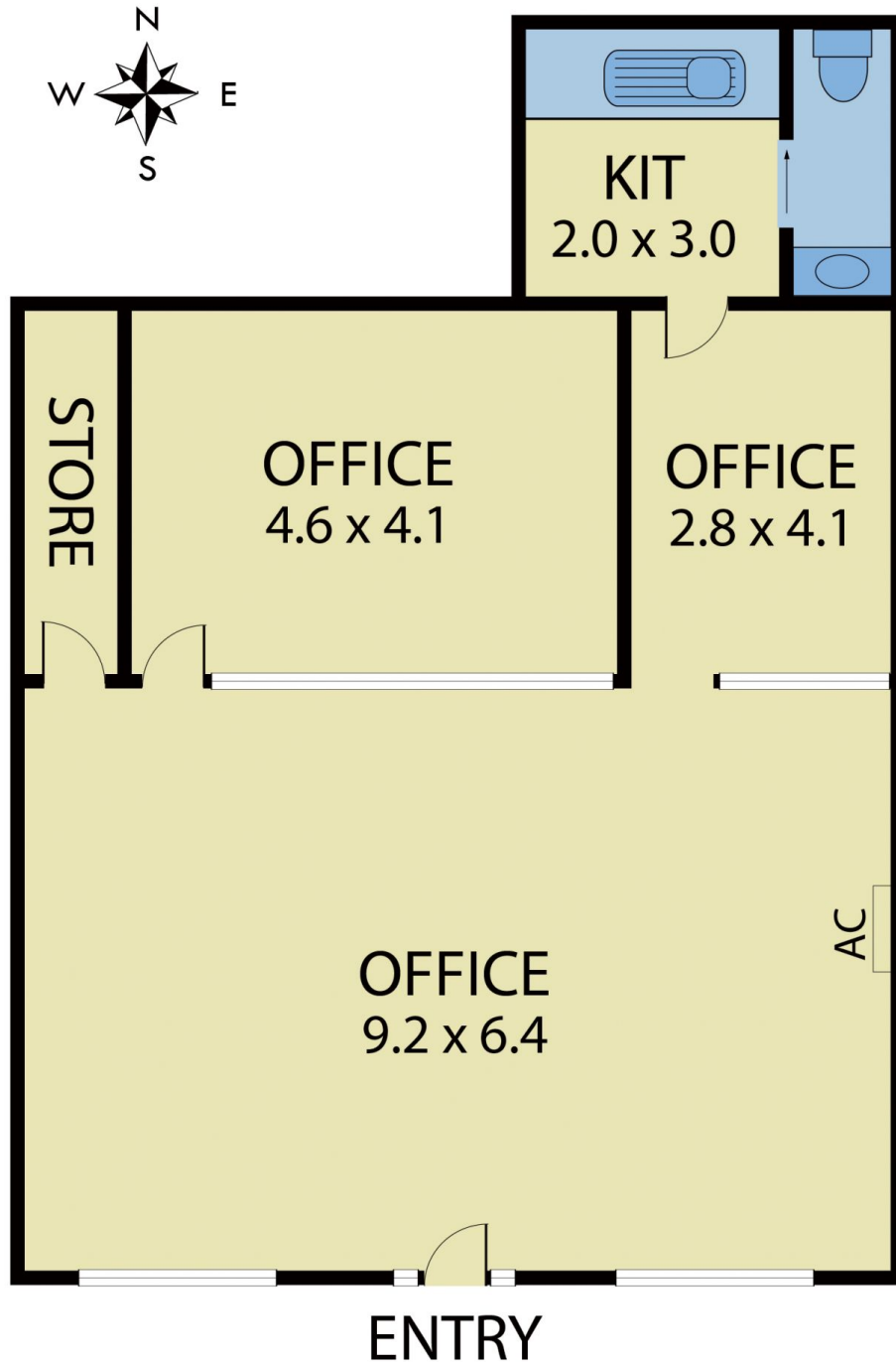
Type	: Offices
Price	: Contact Agent
Land Size	: 367 sqm
View	: https://www.visionrealestate.com.au/lease/vic/north/brunswick-east/commercial/offices/8099063



Frank Romeo
03 9654 9800

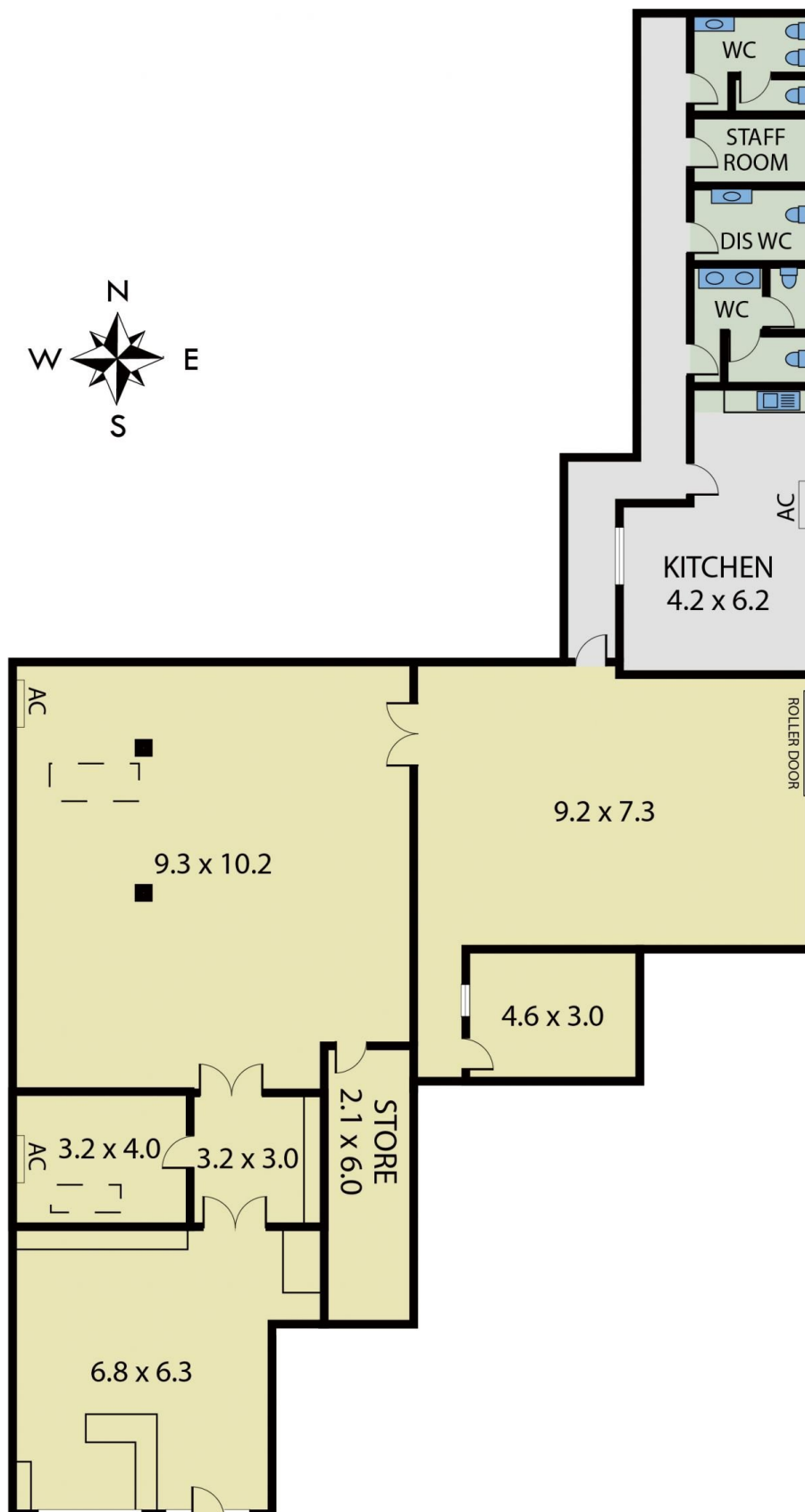
[For full version visit the website](https://www.visionrealestate.com.au)

161 Donald Street, Brunswick



Disclaimer: Whilst we believe the contents of this document to be accurate, we suggest the prospective purchasers make any necessary enquiries to satisfy themselves. We do not accept responsibility for any errors or omissions.

161 Donald Street, Brunswick



Disclaimer: Whilst we believe the contents of this document to be accurate, we suggest the prospective purchasers make any necessary enquiries to satisfy themselves. We do not accept responsibility for any errors or omissions.