



### 37 Mollison Street Abbotsford VIC

6 🚗

Warehouse on the ground floor w/ high clearance dual roller door, mixed with a charming, clean & full of character upstairs office consisting of a exposed ceilings giving a rustic finish.

Ground Floor Warehouse: 320sqm  
First Floor Office: 320sqm

Comes with 6 reserved, private car spaces!!!

Features:

- \* Floorboards Throughout
- \* Open Plan & Private Office Layout
- \* Big Board Room
- \* Dual Roller Door

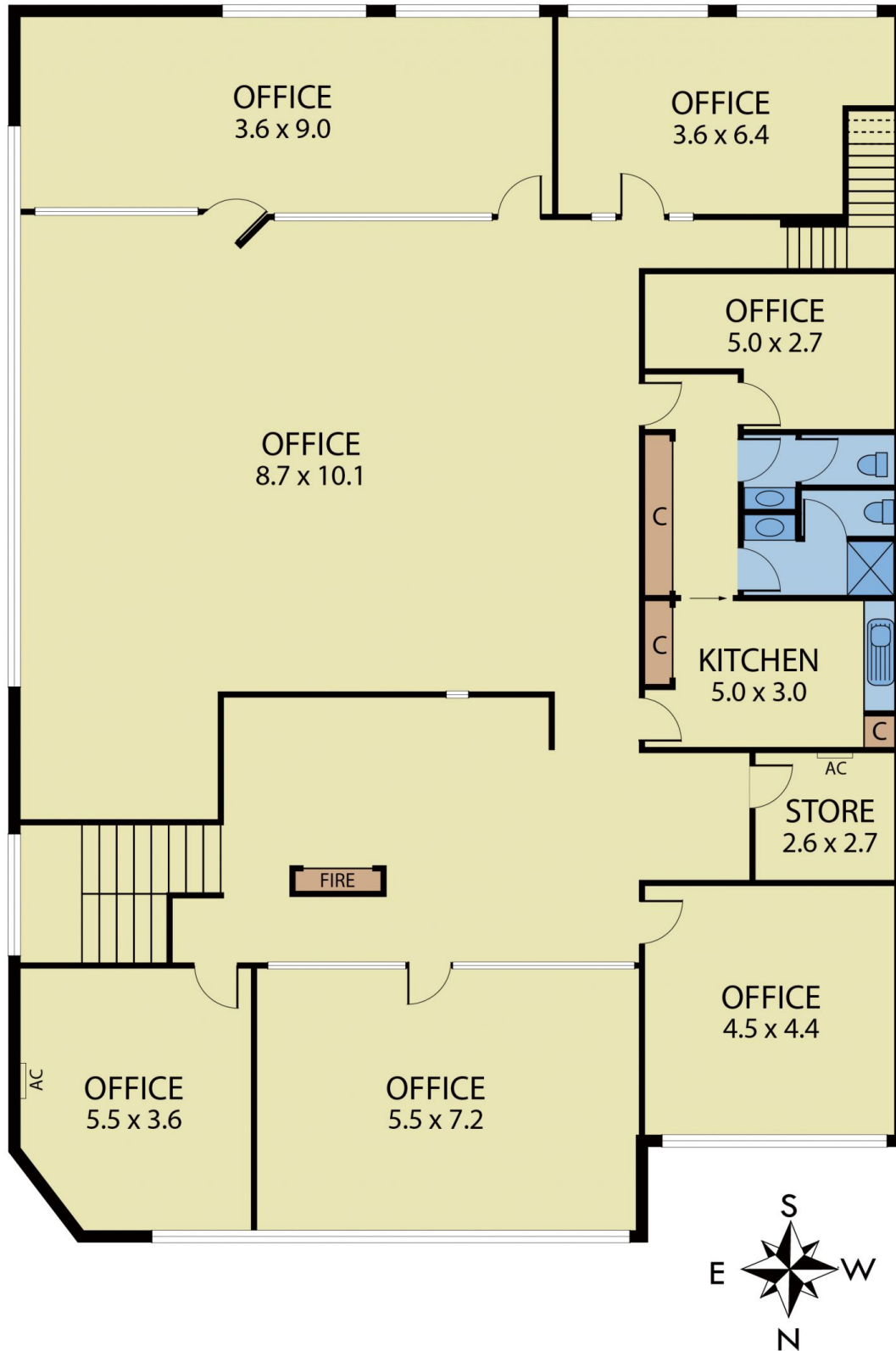
[For full version visit the website](https://www.visionrealestate.com.au)

**Type** : Offices  
**Price** : CONTACT AGENT  
**Building Size** : 640 sqm  
**View** : <https://www.visionrealestate.com.au/lease/vic/inner-city/abbotsford/commercial/offices/8098010>



**Jamison Tsindos**  
03 9654 9800

# 37 Mollison Street, Abbotsford



Disclaimer: Whilst we believe the contents of this document to be accurate, we suggest the prospective purchasers make any necessary enquiries to satisfy themselves. We do not accept responsibility for any errors or omissions.