

Suite 7/144-156 George Street Fitzroy VIC

6 

This property boasts the favorable open plan layout, ready for any business to move in straight away.

- * 290m2 in Size
- * Large Open Plan Work Space
- * Heating & Cooling System
- * Great Natural Light
- * Wired & Ready
- * Desks Are Optional
- * Private Kitchenette/Lunchroom
- * 6 Allocated Car Spaces
- * Short walk to Gertrude Street & Smith Street

Please call Jamison Tsindos on 0430 241 116 to book an inspection.

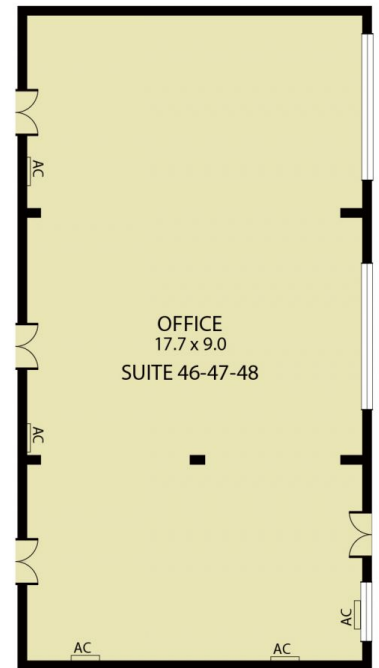
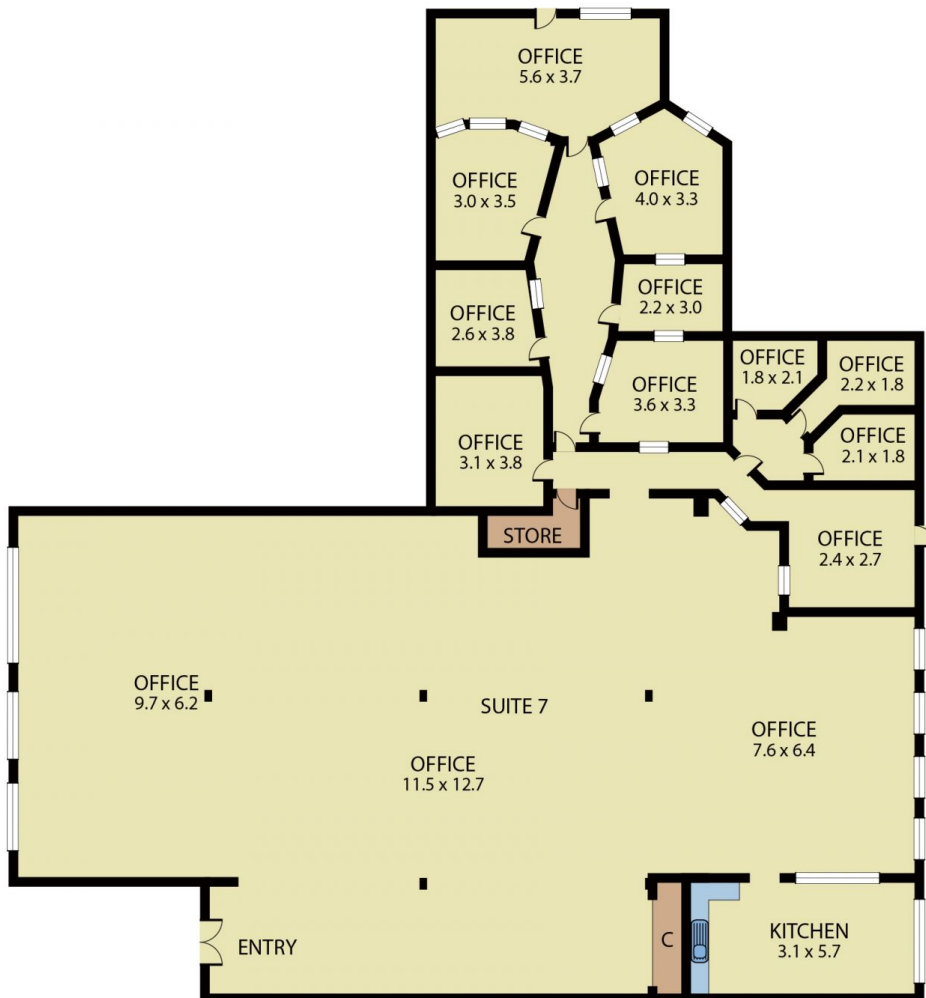
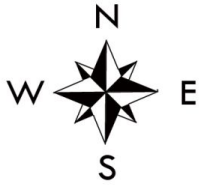
[For full version visit the website](https://www.visionrealestate.com.au)

Type : Offices
Building Size : 290 sqm
View : <https://www.visionrealestate.com.au/lease/vic/inner-city/fitzroy/commercial/offices/7503511>



Jamison Tsindos
03 9654 9800

144 -156 George Street, Fitzroy



Disclaimer: Whilst we believe the contents of this document to be accurate, we suggest the prospective purchasers make any necessary enquiries to satisfy themselves. We do not accept responsibility for any errors or omissions.