



**27a Cameron Street Brunswick VIC**

**2**

Vision Real Estate is delighted to offer this City Fringe Office and Warehouse which is ideally positioned in Brunswick's Industrial Zone.

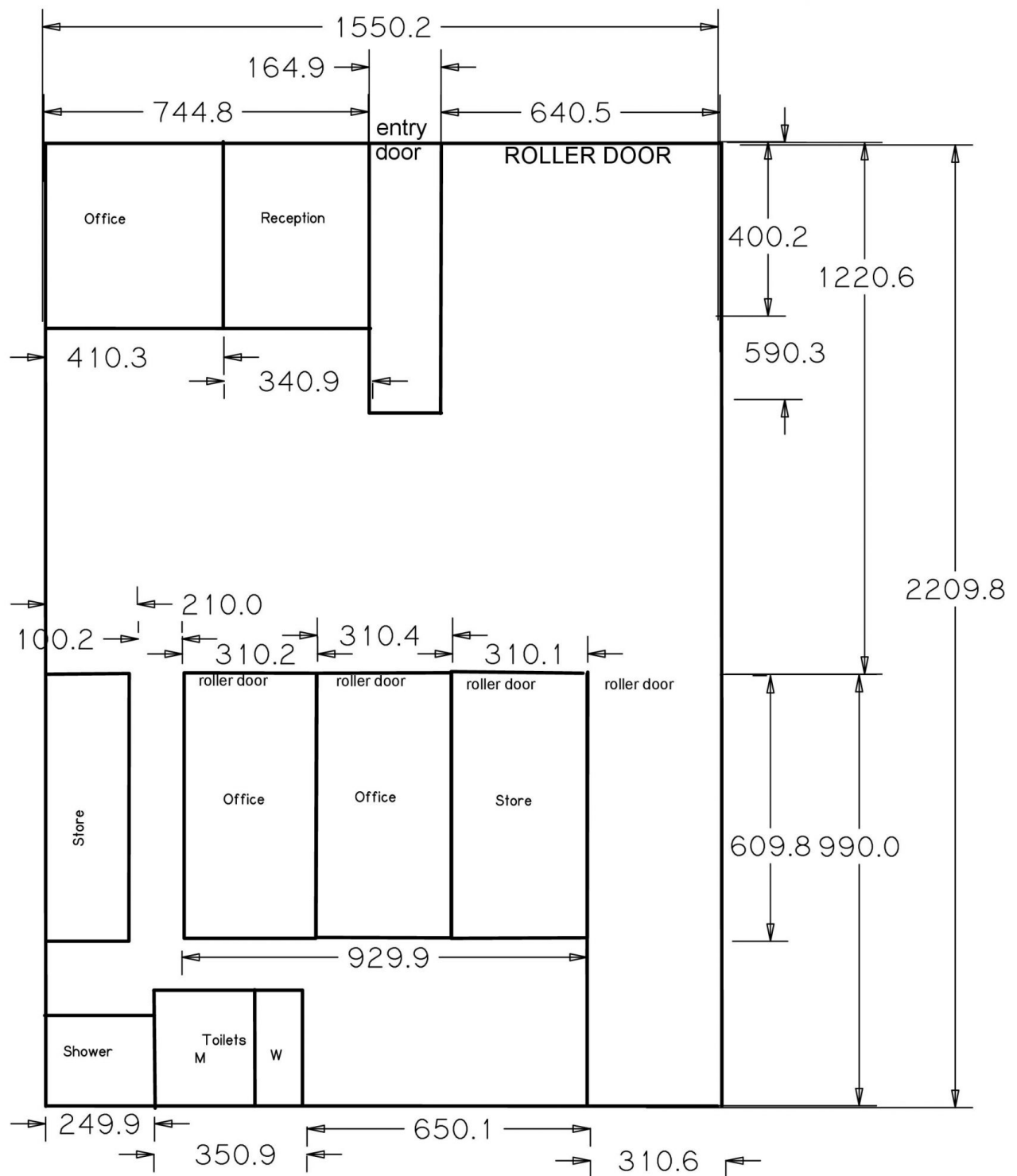
- \*Total building area of 390 sqm\* which includes 55 sqm of first floor office.
- \*Land area- 375 SQM\*
- \*Bathroom with shower.
- \*Ground floor storage units .
- \*Mezzanine providing valuable extra storage space.
- \*Rare Brunswick Industrial 1 zone..
- \*Adjacent to public car park.
- \*Short walk to Sydney Rd Woolworths, shops and cafes.
- \*Easy access to Anstey and Moreland Train station.

**Type** : Industrial  
**Building Size** : 390 sqm  
**Land Size** : 400 sqm  
**View** : <https://www.visionrealestate.com.au/lease/vic/north/brunswick/commercial/industrial/7419961>



**Frank Romeo**  
03 9654 9800

[For full version visit the website](https://www.visionrealestate.com.au)



## FIRST FLOOR

